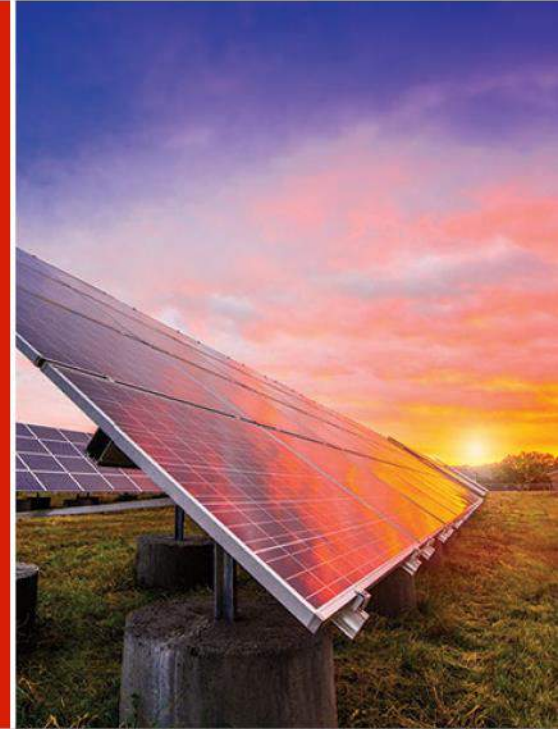




Community Solar Procurements, Programs, and Pricing Workshop

June 8 & 9, 2017



Xcel Energy's Renewables



On track to
reduce CO₂
emissions
30% by 2020



The nation's
#1 utility wind
energy provider
for over a decade



National leader
in renewable
energy choices



Nearly 25% of
the electricity
all customers
receive comes
from renewable
sources

Renewable Energy Program Options



On-site Programs

Solar* Rewards (+ Net Metering)

- Xcel Energy retains the REC
- Full retail net metering
- Must use new equipment
- System can be sized up to 120% of premise history usage
- 20 year contract term
 - Small program (up to 25kW)
 - Medium program (25 -500kW)
 - Large program (>500kW)

Net Metering

- Customer keeps the REC
- Full retail net metering
- Can use existing/used equipment
- System can be sized up to 120% of premise history usage
- Open enrollment: no application expiration

Subscription Programs

Solar*Rewards Community®

- 3rd party subscriptions
 - Gardens are owned and maintained by private companies
- Xcel Energy retains the RECs
- Monetary bill credit on Xcel Energy bill
- Subscribe up to 120% of premise historic usage

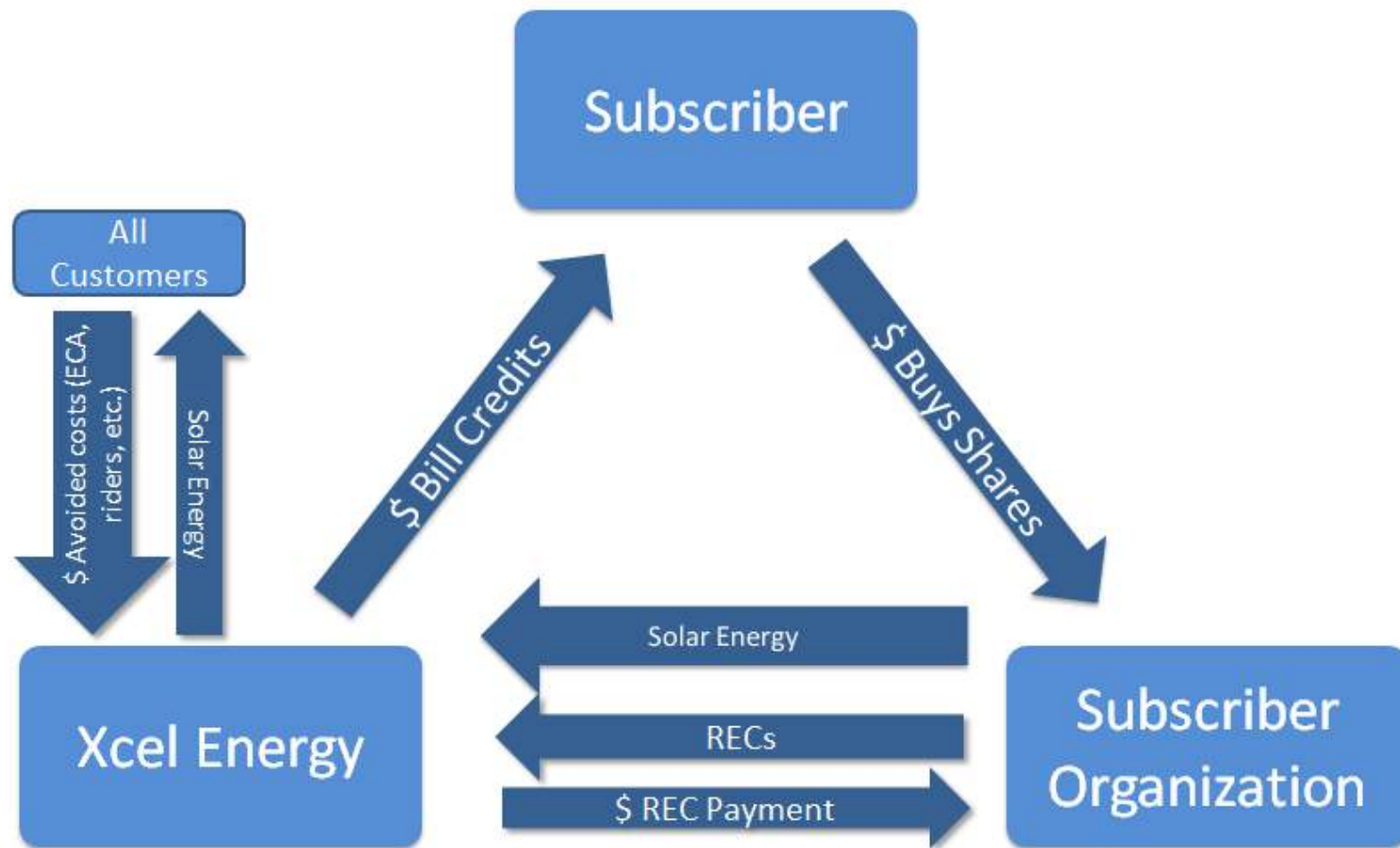
Windsource®

- 100% local wind to offset your energy use
- Sold in 100 kWh blocks
- Customer keeps the REC
- Up to 100% of energy use
- Net cost = 1.5¢ / kWh

Renewable*Connect

- Approved by PUC
- Coming in late 2018
- 100% large scale solar that will be locally sourced
- Customer keeps the REC
- Offers longer term contracts
- Contract directly with Xcel Energy

Solar*Rewards Community®



Solar* Rewards Community®

- Competitive RFP Process (up to 2MW)
 - Offered annually with increasing available capacity
 - 2017 – up to 27MW
 - 2018 – up to 32MW
 - 2019 – up to 37MW
 - Up to an additional 4MW/year will be awarded for 100% low income projects
 - A Q3 launch is being targeted for both 2017 RFP's*

- Standard Offer Processes (up to 100kW)
 - Structured as annual first-come-first-served offerings
 - Two unique 0.5MW offerings based on the average winning REC incentive of each of the respective years RFP's
 - Regular standard offer will add \$20/MWh
 - Low income standard offer will add \$10/MWh



Community Solar Procurements, Programs, and Pricing Workshop

June 8 & 9, 2017

